

A woman with brown hair tied back, wearing a white and red American Red Cross uniform, is smiling and hugging a young boy. The boy is wearing a dark blue shirt and looking towards the camera. The woman's uniform has a red cross on the chest and the text "American Red Cross" and "Disaster Relief" on the sleeve. The background is a soft-focus indoor setting.

# Fiscal Year 2011 Annual Report

American Red Cross of Greater Cleveland



**American  
Red Cross**

of Greater Cleveland



# Thanks To Our Tireless Volunteers

**O**ur thanks to the volunteers who provided vital support to the American Red Cross of Greater Cleveland over the past year by responding to disaster scenes, assisting clients, and working in our offices, and at our events, and by serving as our ambassadors in the communities we serve. We would be unable to fulfill our mission without you.

If you are interested in becoming a Red Cross volunteer, please visit [www.redcross-cleveland.org](http://www.redcross-cleveland.org) and click on the volunteer link to get started.

---

## **Executive Staff**

*For Fiscal Year 2012*

Mary-Alice Frank	<i>Chief Executive Officer</i>
Susan Christopher	<i>Communications Officer</i>
Linda DelMonico	<i>Director of Emergency Services</i>
Robert Fertal Jr.	<i>Director of Facility Services</i>
Marvin Sharpless	<i>Chief Operating Officer</i>
Elisabeth Sherman	<i>Chief Development Officer</i>

# Dear Friends,

**A**cross the country, around the world and here in our own community, the American Red Cross faced many challenges in fiscal year 2011. We are pleased to report that our organization responded exceedingly well, continuing to provide the vital programs and services for which the Greater Cleveland community depends on us. We did all this while once again finishing our fiscal year in the black, on revenues of \$11.0 million.

Take for example, our Nurse Assistant Training program, which completed its 20th year in operation in 2010. Through this program last year, we trained 864 individuals with life-changing skills enabling them to obtain, what is for many, their first meaningful job in the workplace. Thomas Cheesbro is one of our success stories. He was looking for a training program that would enable him to re-enter the healthcare field after a number of years of unemployment. Read his inspiring story on the following pages.

You also will read the emotional story of one of our disaster services clients, Dianna Davis and her family, who

experienced a horrible fire that gutted their Garfield Heights home, and caused Dianna to suffer second degree burns across a substantial portion of her body. Dianna and her family were able to put their lives back together with the help of the Red Cross staff and volunteers who assisted them on the day of the fire and for many months afterwards.

This past year, we also faced the challenge of responding to a large-scale disaster in our region which occurred in Fairport Harbor, Ohio, when gas lines failed and multiple explosions erupted. Our volunteers quickly responded to the evacuation of residents by setting up multiple shelters, and providing comfort and support to worried and displaced citizens.

FY11 also saw an increase in the services we provided to our Armed Forces. We had contacts with over 3,200 new military inductees; we worked 627 cases; and briefed 500 military members and their families on Red Cross services available to them. As our country continues to be involved in military missions overseas, the role we play with supporting our service members and their families continues to be an important one.

And while we responded to many challenges, we also celebrated a significant milestone. In the calendar year of 2010, the City of Cleveland experienced just two fire-related fatalities. This is the lowest number since 1898. We



attribute this achievement, in part, to our *Operation Save-A-Life* program which installs free smoke alarms and provides batteries to residents. To date, we have installed over 130,000 free smoke alarms.

Additionally, as the fiscal year drew to a close, we adapted to a substantial National realignment in which our Chapter's responsibilities have been expanded to cover 15 counties in Northeast Ohio.

We cannot do what we do without the generous support of our donors who supply us with financial gifts; our strong and dedicated board of directors; volunteers who give their time; and those who realize the importance of being prepared by taking a Red Cross health and safety training class, such as first aid or CPR. With your help, we remain the community leader in emergency preparedness, responding to disasters with humanitarian aid and providing health and safety training. Thank you for your continued support.



*Richard W. Pogue*

Richard W. Pogue  
Chairman,  
Board of Directors



*M. Frank*

Mary-Alice Frank  
Chief Executive  
Officer



**American  
Red Cross**  
of Greater Cleveland



## Profile: Thomas Cheesbro

**T**homas Cheesbro was looking for a training program to get him back into the healthcare field. He had worked a number of years ago as a nurse aide, but had taken off the past several years to be a stay-at-home dad when his wife started a new position. When he learned that the Red Cross was offering a Nurse Assistant Training (NAT) program, funded through the Department of Health and Human Services, he jumped at the chance to enroll.

“I stayed at home with our children when they were very young,” explains Thomas. “My wife had a great job opportunity at the time and it just made sense for me to be the one to stay home with our children. But our children were growing a little older, and when I found out about the opportunity to enroll in the Red Cross NAT program, I couldn’t pass it up.”

Thomas says he was very impressed with the program and especially the instructors. He was a diligent student and passed the class with a 102 percent average taking top High Honor Roll honors. He went on to pass the State Test on the first attempt, which gave him the State Tested Nurse Assistant (STNA) credential. He even had a job offer from attending the Red Cross Job Fair with local nursing homes, home health aide agencies and hospitals participating. He began his job as an STNA with Windsor House in Youngstown right away.

“You have to want this career,” says Thomas. “It is hard work, but very gratifying when you know that you are helping people who really need your assistance. The STNA is the person on the front line working with the patients directly. You have to have the right motivation and drive to do this job as it is much more than a job – it is a calling.”

Thomas plans on continuing his health care career progression by pursuing a degree as a registered nurse in the future. “I am so grateful to the Red Cross for helping make this career path possible for me.”

*“You have to want this career. It is hard work, but very gratifying when you know that you are helping people who really need your assistance.”*

**Thomas Cheesbro** (pictured above, with patient), graduate of NAT program

## Profile: Dianna Davis

**D**ianna Davis had returned home from work in the late afternoon on a cold and snowy February day this past winter and jumped in the shower as she normally did after her shift. As she was getting out of the shower, she heard her 13-year-old son, Dijon, and 14-year-old nephew, Tyrell, yelling “It’s on fire, it’s on fire!”

Dianna threw on some clothes and ran downstairs to the kitchen where the electric stove was shooting up flames. By this time, Dijon had a cup of water that he was ready to throw on the fire. Dianna stepped in between him and the stove as he threw the water. The flames erupted into even bigger flames and caught her on fire on her right hand, her shoulder and the back of her neck.

Dianna said that instinct took over and she immediately “stopped, dropped and rolled” to put out the fire on her body. She then yelled for Dijon, Tyrell and her 11-year-old daughter, Shianna, who also was in the house, to run outside with her. She said she barely remembers everything that happened at that point but can still recall the excruciating pain and burn she felt encompassing her body. Dijon immediately called 911, but the house was already consumed by flames. The Garfield Heights Fire Department and EMS quickly arrived.

Dianna was treated at Marymount Hospital and referred to the burn unit. Helping her and her family mend their lives were volunteers from the American Red Cross of Greater Cleveland’s Disaster Action Team.

Dianna recalls, “It meant a lot to me that the Red Cross was there for us. Our house was gutted and we lost everything. The Red Cross helped us find temporary housing, they provided assistance in replacing our lost clothes, bedding and furniture.

“The case worker who helped us was sweet, kind and uplifting,” continued Dianna, who still is recovering from the burns to her body. “She reassured us that life would get back to normal for us. The fire was a great surprise to us, but it made me realize that a tragedy can happen to anybody. I was grateful and feel fortunate that the Red Cross was there to lend a helping hand and help us piece our lives back together.”



*“The fire was a great surprise to us, but it made me realize that a tragedy can happen to anybody. I was grateful and feel fortunate that the Red Cross was there to lend a helping hand.”*

**Dianna Davis** (pictured above right, with daughter Shianna and son Dijon)



**American  
Red Cross**  
of Greater Cleveland

# Partner with Us



## Emergency Services

**Disaster Response.** With the help of hundreds of trained volunteers, we provide immediate relief and assistance to victims of local disasters including food, clothing, shelter, and debit cards to assist with relocation, utilities, major appliances and beds.

**Services to the Armed Forces.** When local families with a loved one in the military experience a crisis, they can contact the Red Cross 24 hours a day, 365 days a year. The Red Cross verifies their information and transmits it through a worldwide network to military authorities.

**Holocaust and War Victims Tracing and Information Center.** The Red Cross searches to help families find missing information and discover the fate of loved ones separated during the Holocaust and World War II.

**International Tracing.** The Red Cross helps families gain information about one another in times of crisis.

## Training/Classes

**Water Safety and Swimming.** We offer a full range of classes and courses, including learn to swim, lifeguard, boating safety, aquatic exercise and aquatic examiner classes.

**CPR, AED and More.** Life-saving training is offered including first aid, CPR, Automated External Defibrillator (AED), babysitting certification and even pet first aid. These classes can be tailored to groups and individuals.

**Workplace Safety Training.** We offer a full range of programs that meet OSHA and other workplace training program requirements.

**Nurse Assistant Training.** A 120-hour training course, including 24 hours of supervised clinical experience, designed for individuals who wish to work in nursing home and home health care settings. Upon completion of the course, students are eligible to take the Ohio state test.

## Volunteerism

The Red Cross is a volunteer-led organization. We could not fulfill our mission without trained volunteers who assist in emergency response; by serving on our board of directors and on committees providing their knowledge, counsel and expertise; in administrative support roles; in marketing, communications, graphic design and public relations; human resources; special events and more.

**Volunteers.** Individual volunteers decide the amount of time they are able to give. There are a variety of different volunteer opportunities to fit any person's busy schedule. People can volunteer once a week, once a month or even once a year depending on the type of volunteer opportunity chosen.

Here are just a few of the Red Cross volunteer opportunities offered: blood drives, Disaster Action Team member, internships, management support, marketing/advertising, office/clerical/data entry and special events.

## Programs

**GenerationReady™.** A citizen's emergency preparedness initiative designed to help prepare seniors for emergencies. Its components are:

1. Get a kit.
2. Make a plan.
3. Be informed.

**Operation Save-A-Life.** The Red Cross, in cooperation with local fire departments, distributes and installs smoke alarms and batteries in the homes of economically disadvantaged and at-risk individuals and families. Since 1991, more than 130,000 smoke alarms have been installed in more than 30,000 homes in Cleveland and other area communities.

## Products

**First Aid Kits.** We offer many different types of first aid kits from family packs to pet kits to road hazard kits.

**Lifeline.** Lifeline is an easy-to-use personal service that ensures older adults and physically challenged individuals can get quick assistance whenever it may be needed. When help is needed, they press a button and within seconds, a certified Lifeline professional responds, assesses the situation and summons appropriate help.

**AEDs.** We offer the top brands of Automated External Defibrillators (AEDs) and the related accessories and supplies, in addition to the training on how to properly use the equipment in an emergency response situation.

## Cause-Related Marketing

Promote your company in conjunction with the Red Cross brand, raising money for our organization while enhancing your company's reputation, demonstrating its values, enlisting customer loyalty and stimulating the purchase of your products and services.

**Co-Branded Products.** Co-branded products, such as first aid kits, feature the Red Cross logo as well as your company's logo. Products are sold at retail or distributed through your company's distribution channels with a percentage or dollar amount per product benefitting the Red Cross.

**Sponsorship of Programs.** We offer opportunities to sponsor programs or initiatives, such as Operation Save-a-Life and GenerationReady. Sponsorships include benefits to your company such as recognition on marketing literature, press releases, annual report, newsletter and our website.

## Philanthropy & Giving

The Red Cross depends upon donations to ensure its many programs and services can continue to be offered to more than two million people in Ashland, Cuyahoga, Geauga and Lake Counties. You can give us undesignated general support; designate to a specific program; designate to an endowment; and promote customer/employee donation programs; and planned giving.

**Matching Gifts.** Many companies encourage employee charitable giving through a matching donation program. Maximize the value of your gift by applying for a match and sending us the matching gift form along with your donation.

**Charitable Annuities.** This is a contract in which the charity agrees to pay the donor income for life in exchange for an irrevocable gift. The amount of fixed payment is based on the donor's age. Call the Red Cross for payment percentages.

**In-Kind Support.** The Red Cross accepts large in-kind donations to assist disaster victims and its day-to-day office work. Items can include paper, pens, binders, blankets, batteries, water, snacks and more. We also accept in-kind donations in support of special events, including graphic design and printing.

**Meet, Greet and Learn.** Learn more about the Red Cross mission, our programs, products, services and volunteers through our interactive one-hour session.

## Event Sponsorship

The Red Cross of Greater Cleveland holds many events that offer corporations and organizations visibility and marketing benefits while at the same time providing financial support to our local chapter.

**Red Cross Ball of Cleveland.** Cleveland's premier gala will be held again in the spring of 2012. It brings together our community's corporate, philanthropic and social leaders. An elegant, black-tie affair, the Ball is one of the largest, most visible and anticipated events in Cleveland.

**Hero Awards.** Red Cross Hero Awards held in the fall recognizes local heroes – unsung, ordinary citizens who have performed extraordinary acts of kindness and humanitarianism. This inspirational event draws a large crowd and showcases the best in humanity.

**Red Cross Cup.** This fun-filled summer golf outing features challenging golf on a beautiful course. Afterward, a 19th Hole Reception and Auction features vacation packages, sports memorabilia, fine dining gift certificates and tickets to local sporting events.



**American  
Red Cross**  
of Greater Cleveland

# Highlights and Statistics *(July 2010 - June 2011)*



## Chapter Highlights

Our **Nurse Assistant Training** program celebrated its 20th year of operation helping economically and educationally disadvantaged individuals gain valuable skills equipping them to become State Tested Nurse Assistants (STNAs). In FY11, we trained 864 individuals in Ashtabula, Cuyahoga, Lorain, Mahoning and Trumbull counties.

**Operation Save-A-Life**, our program that provides free smoke alarms, launched the Campaign to Save-A-Life, with Mayor Frank Jackson and Sam Miller, retired Chairman of Forest City Enterprises, as the honorary co-chairmen. Our goal is to raise \$1 million in endowment funds. Over the history of the program, we have installed over 130,000 smoke detectors in partnership with the City of Cleveland, Division of Fire and other local fire departments.

Our **Disaster Action Team** responded to the gas explosion in Fairport Harbor, located in Lake County, and provided services to the residents following multiple gas explosions, which also required the evacuation of many residents. Red Cross shelters were opened at the Fairport Harbor Community Senior Center and Harvey High School.

We participated in the **Save-A-Life Saturday**, in honor of Congresswoman Gabrielle Giffords of Arizona who was shot in the head earlier in the year. The event called attention to the importance of knowing first aid and CPR skills.

We held successful fundraising events during the year, including the **Heroes** event in Cleveland, and one in Lake and Geauga counties; **Fill the House for Charity** with the Cleveland Indians; and the **Red Cross Cup** golf event held at Canterbury Golf Club.

## Service Statistics

### Disaster Services

Disaster incidents:	366
Families served:	648
Individuals served:	1,873
Mass care incidents:	14
Individuals served w/mass care:	2,135
Individuals reached w/community disaster education:	8,656
Information and referral calls:	1,321
Participation in drills:	82 volunteers participated in 4 drills

### Operation Save-A-Life

Smoke alarms installed:	2,989
-------------------------	-------

### International Tracing Services

Cases served:	8
---------------	---

### Services to the Armed Forces:

Cases served:	627
Military members/families briefed on services:	500
Contacts with new military inductees:	3,234

### Health and Safety Services:

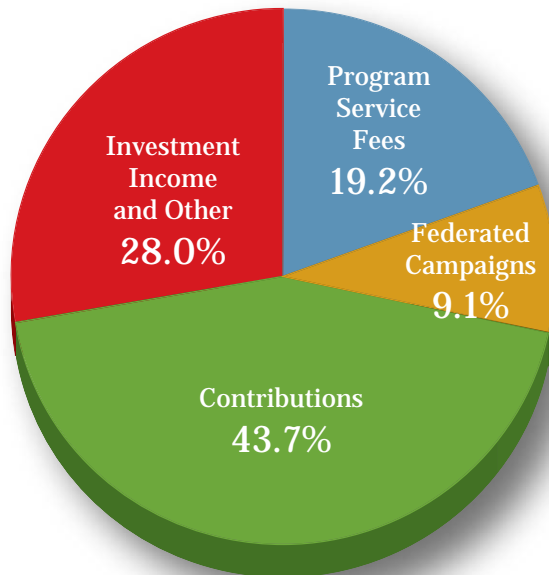
Programs and participants trained	
First aid, CPR and AED:	87,070
“Be Red Cross Ready:”	4,291
Aquatics:	48,058
Nurse Assistant Training:	864

### Volunteer Services:

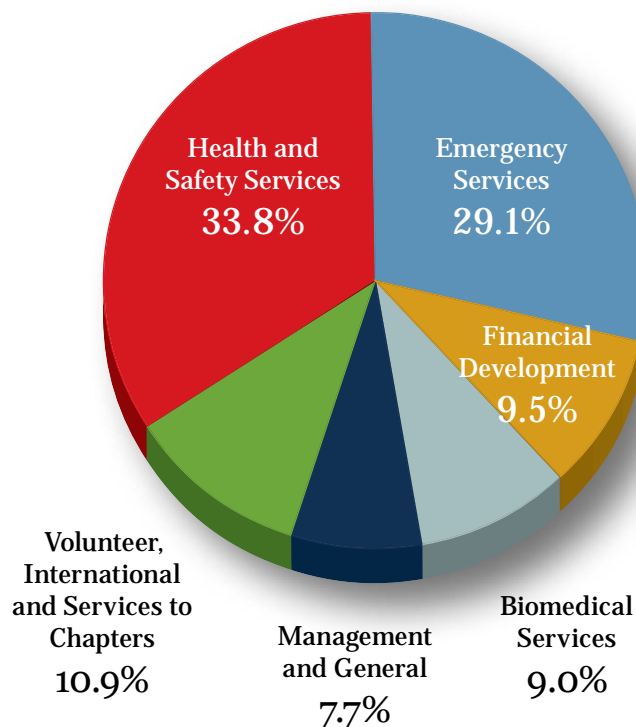
Active Volunteers	620
-------------------	-----

# Chapter Finances

## Total Revenues



## Total Expenses



### Total Revenues

Contributions	\$4,806,574
Federated Campaigns	\$1,000,704
Program Service Fees	\$2,111,897
Investment Income and Other	\$3,085,940

**Revenues** **\$11,005,115**

### Total Expenses

Emergency Services	\$2,360,725
Health and Safety Services	\$2,740,757
Financial Development	\$772,387
Biomedical Services	\$729,056
Management and General	\$629,357
Volunteer, International and Services to Chapters	\$886,767

**Expenses** **\$8,119,049**

**Net Assets, June 30, 2011** **\$14,684,426**



**American Red Cross**

of Greater Cleveland

# Our Donors

July 1, 2010 – June 30, 2011

The American Red Cross of Greater Cleveland salutes our 2010/2011 supporters. These individuals, family foundations and organizations made generous contributions that allowed the Red Cross to fulfill its mission to help the people of our community prevent, prepare for and respond to emergencies.

Our thanks to the 16,736 donors who supported the Chapter this past year. Although, we cannot list every name, please know that your contribution is important and appreciated. If your name has been omitted or does not appear as you would like, please accept our sincere apologies and contact Katie Brickner at 216-431-3083 or bricknerk@redcross-cleveland.org.

*Please note that the following list includes gifts of \$250 or more received between July 1, 2010 and June 30, 2011.*

## Henry Dunant Society

Henry Dunant, a Swiss businessman, initiated relief efforts that led to the founding of the International Red Cross and Red Crescent Movement. It is in his name that we honor individuals and family foundations whose lifetime giving in cash contributions, securities or property to the Greater Cleveland Chapter exceeds \$50,000.

### Founder's Circle: \$250,000+

Anonymous(2)  
Ms. Violet Ansoerge\*  
Raymond Q. and Elizabeth Riele  
Armington Fund supporting organization  
of The Cleveland Foundation  
Eva L. and Joseph M. Bruening  
Foundation  
The George Gund Foundation  
Ms. Dorothea W. Hamilton  
Mr. John C. Heege\*  
The Higley Co.  
The Higley Fund, a supporting  
organization of The Cleveland  
Foundation  
Mr. and Mrs. Albert M. Higley, Jr.  
Ms. Josephine Kmiotek\*  
Mrs. Dorothea F. Larsen\*  
Iris Marshall\*  
The Murch Foundation  
David\* and Inez\* Myers  
Nonneman Family Foundation  
Frederick E. and Julia G. Nonneman  
Foundation

John J. O'Brien\*  
The F. J. O'Neill Charitable Corporation  
The S.K. Wellman Foundation  
The Sherwick Fund  
Ms. Leona L. Siller  
The Kent H. Smith Charitable Trust  
Mrs. Robert M. Zverina  
Mr. John Wootton\*

### Chairman's Circle: \$100,000 - \$249,999

Anonymous(7)  
Ms. Lola Altman\*  
Ms. Esther M. Barega\*  
Mr. Paul R. Brahaney\*  
Britton Fund  
Mr. Martin F. Bush\*  
The Martha B. Carlisle Memorial Fund  
George W. Codrington Charitable  
Foundation  
Helen C. Cole Charitable Trust  
Corinne L. Dodero Foundation for the  
Arts and Sciences  
Lorraine Frankino-Dodero  
Ms. Edna K. Fletcher\*  
Mrs. Eleanor R. Gerson\*  
Mr. Oliver J. Grummit\*  
Mrs. Ruth L. Hankins\*  
Mrs. Janet D. Heil\*  
Creda Hepp\*  
Mr. Donald F. Hooton\*  
Ceil Schwab Johnson & Theodore M.  
Johnson Foundation  
Mr.\* and Mrs. Frank E. Joseph Jr.  
Betty Cutting Kenny Endowment Fund  
Miss Evelyn Kious\*  
Dr. William M.\* and Mrs. Beryle\* LeSuer  
Mr. Peter B. Lewis  
Mrs. Harriet Hoy Lincoln\*  
Mr. Frederick J. Lipp\*  
Mr. P. Gordon McAusland\*  
The McGregor Foundation  
The Samuel H. and Maria Miller  
Foundation, Inc.  
Mr. and Mrs. A. Malachi Mixon III  
Mrs. Josephine L. Morris\*  
The Inez Myers Charitable Gift Annuity  
Joseph J. Nemeth\*  
Ms. Agnes Pahlow\*  
Elisabeth Severance Prentiss Foundation  
The P.K. Ranney Foundation  
Michael Sarly\*  
The Second Foundation  
Mrs. Thelma G. Smith\*  
Helen L. Spachtholz\*  
Mr. and Mrs. Robert J. Tomsich  
Miss Pauline Thesmacher\*  
Mr. and Mrs. Hugh R. Whiting  
John S. Whittlesey\*  
Ms. Frances R. Zverina

### Leader's Circle : \$50,000 - \$99,999

Anonymous(3)  
Mr. and Mrs. Monte Ahuja  
The Abington Foundation  
Mr. Albert T. Adams

Miss Doris W. Alburn\*  
Mrs. Betty M. Ambrose\*  
Mr. Thomas L. Boey\*  
Ms. Margaret Anne Brosnan\*  
Mr. and Mrs. Steve D. Bullock  
Miss Florence Cellar\*  
Mr. and Mrs. Lawrence J. Dolan  
David and Karen Doll  
Frederick W. and Janet P. Dorn Foundation  
The Elisha-Bolton Foundation  
Mrs. Virginia B. Ellerbrock\*  
Albert Stratman\*  
The Firman Fund  
Ms. Charlotte R. Hansen\*  
Haskell Fund  
HCS Foundation  
Gertrude C. Donnelly Hess, M.D.\*  
Ms. Dorothy L. Hofrichter\*  
Mr. and Mrs. William N. Hulett III  
The Martha Holden Jennings Foundation  
Mr. and Mrs. Melvin Kamins  
Malcolm E. Kenney, Ph.D.  
Mrs. Thelma K. Kettle\*  
Ms. Emma Kimack  
Ms. Laurie J. Laidlaw  
The Lenox Foundation, Inc.  
Irvin and Elin Leonard  
Terei S. and Marie Levine  
The Helen and Joseph Lewis  
Philanthropic Fund  
Mr. Raymond J. Lewis  
Ms. Joyce A. Lustig\*  
The Jack N. and Lilyan Mandel Foundation  
Mr. Jack N. Mandel\*  
Mr. and Mrs. Edward C. Martinelli  
Mr. and Mrs. Hugh E. McKay  
Mr. and Mrs. John H. McMillan  
Ms. Kathleen McQueen\*  
Miss Martha M. Moore\*  
Mr. and Mrs. John G. Morikis  
The Josephine L. Morris Charitable Lead  
Annuity Trust  
The John P. Murphy Foundation  
The Nord Family Foundation  
William J. & Dorothy K. O'Neill Foundation  
Mr. John D. Opie  
Mr. Robert J. Paskert  
Mrs. Charles F. Pennington  
Dr. Alfred Politzer\*  
R. T. Foundation  
Richey Family Foundation  
Ms. Elizabeth F. Roeder\*  
Brad Roller and Laura Pedersen  
Saint Ann Foundation  
Bob and Ellie Scheuer  
Delia Simandl\*  
The Kelvin and Eleanor Smith Foundation  
Vivian N. Smith\*  
Kenneth F.\* and Roseanne Snyder  
Mr. and Mrs. Ratanjit S. Sondhe  
Ms. Esther R. Stern\*  
The Thomas C. and Sandra S. Sullivan  
Foundation  
Ms. Jean H. Taber  
Mr. Raymond Thoms  
The Thomas H. White Foundation  
Mr. Scott A. Wolstein

## Tiffany Circle Society

The Tiffany Circle is a society of women leaders and philanthropists. By investing \$10,000 annually in the American Red Cross, these women follow in the footsteps of a long line of women leaders who have helped the Red Cross serve the American public in times of war and peace with disaster assistance, blood collection, safety training and countless other community assistance services.

Anonymous (1)  
Ms. Corinne L. Doderof  
Mrs. Ann Fisher-Yan  
Mrs. Lorraine Frankino Doderof  
Mrs. Mary-Alice Frank†  
Mrs. Nancy Kole  
Ms. Laurie J. Laidlaw†  
Mrs. Elin Leonard  
Ellen Minadeo  
Ms. Laura Pedersen  
Mrs. Charles F. Pennington  
Mrs. Shelley J. Seifert  
Ms. Donna Rae Smith†  
Ms. Jean H. Taber

### Tiffany Circle Program Support

JP Morgan Cleveland Private Wealth Management  
Technical Consumer Products Company, TCP, Inc.

† Denotes lifetime member

## Clara Barton Society

Clara Barton, the founder of the American Red Cross, was a leader in the movement to relieve human suffering. The Clara Barton Society recognizes individuals and family foundations who donated \$1,000 or more to the Greater Cleveland Chapter in the 2010/2011 fiscal year to support all the vital services provided by the Chapter.

### President's Council: \$500,000 - \$999,999

The Higley Fund, a supporting organization of The Cleveland Foundation  
The Albert M. Higley Jr. Family  
Mr. John Wootton

### William Howard Taft Council: \$100,000 - \$499,999

Mrs. Lois N Agnello  
Dr. and Mrs. Joseph Nonneman Family Foundation  
Ms. Anita C. Nonneman  
Frederick E. and Julia G. Nonneman Foundation

### Charles Drew Council: \$25,000 - \$49,999

Mrs. Marcella S. Nelson\*  
William J. and Dorothy K. O'Neill Foundation  
Brad Roller and Laura Pedersen  
Hugh and Sherry Whiting  
Mr. and Mrs. Ellis E. Yan  
Fisher-Yan Family Foundation

### George Marshall Council: \$10,000 - \$24,999

Anonymous(1)  
Albert T. Adams  
Ms. Violet F. Busser  
Louise and Leonard Fletcher Foundation  
The Hankins Foundation  
Mrs. Ruth L. Hankins  
Mr. and Mrs. Clark H. Khayat  
Irvin and Elin Leonard  
Mr. Raymond J. Lewis  
Mr. and Mrs. Samuel H. Miller  
Mr. and Mrs. Creighton B. Murch  
The Murch Foundation  
E. Nedved\*  
Mrs. Charles F. Pennington  
Mr. and Mrs. Richard W. Pogue  
Ms. Donna Rae Smith  
Mr. and Mrs. Ratanjit S. Sondhe  
Mr. Albert Stratman\*  
Ms. Jean H. Taber  
Mr. and Mrs. Chester W. Topp  
Ms. Ellen Y. Yan  
The Robert Zverina Family  
Ms. Frann Zverina

### Lady Bird Johnson League: \$5,000 - \$9,999

Anonymous(2)  
Frederick W. and Janet P. Dorn Foundation  
Mrs. Peggy N. Einstein  
Mary-Alice and Richard Frank  
Mrs. John A. Hadden  
Mr. and Mrs. Earl Hawkins  
Mrs. Janet D. Heil\*  
Mrs. Anne M. Jones  
Mr. and Mrs. Melvin Kamins  
Mr. and Mrs. Andrew Kartalis  
Mr. James F. Kirsch  
Mr. and Mrs. John R. Kish  
Mr. William Koehler  
Mr. and Mrs. Robert J. Kwait  
Laurie J. Laidlaw  
Mr. and Mrs. Timothy J. Lathe  
Mr. Bob Lee  
Teri S. and Mark Levine  
Mrs. Elizabeth F. McBride  
Mr. and Mrs. Bruce A. McCrodden  
Mr. and Mrs. John H. McMillan  
John and Tammy Morikis  
Mr. and Mrs. Richard W. Pogue  
Mr. and Mrs. Shawn M. Riley  
Carol and Charles A. Rini, Sr.  
Mr. and Mrs. George E. Roller  
Bob and Ellie Scheuer  
Mr. and Mrs. Michael Sherwin  
Smiling Forever Foundation  
Mr. Mark R. Stevens  
Mr. Frank C. Sullivan  
Mrs. Ethel S. Szabo

### Commodore Wilbert Longfellow League: \$2,500 - \$4,999

Mr. and Mrs. Arthur B. Boehm  
Mr. Warren E. Bucher  
Mr. and Mrs. Edward Burke  
Mr. Michael Catan  
Mr. Bruce A. Celek  
Mr. and Mrs. James C. Cellura  
Gay Cull Addicott  
Dr. and Mrs. Robert B. Daroff  
Anthony Decello and Rebecca Zuti

Mr. and Mrs. Dennis A. Devine  
Matthew J. Dolan  
Mr. and Mrs. Henry H. Frank  
Rochelle and Harley Gross Philanthropic Fund  
Mr. and Mrs. Daniel C. Hagen  
Mr. and Mrs. Eric A. Hillenbrand  
Dr. and Mrs. Gerald A. Hoeltge  
Joseph F. Kelley, M.D.\*  
Mr. and Mrs. Leonard A. Komoroski  
Karen and Thomas LaFond  
Mr. and Mrs. Ronald L. Leach  
Mr. and Mrs. Frank N. Linsalata  
Mr. and Mrs. Edward C. Martinelli  
Mr. and Mrs. Bruce Klink  
Mr. and Mrs. John Olejko  
Mr. and Mrs. Robert A. Perona  
Kip and Sarah Reader  
Mr. and Mrs. Thomas E. Sass  
Mr. Roger Sherrard  
Mr. and Mrs. Edward H. Snider  
Mr. and Mrs. Thomas C. Sullivan  
Mr. Tinkham E. Veale II  
Mr. Dickson L. Whitney, Jr.  
Mr. and Mrs. Timothy F. Wuliger  
Mr. and Mrs. Martin R. Wymer

### Jane Delano League: \$1,000 - \$2,499

Anonymous(10)  
Mr. Steven M. Adler and Ms. Carol N. Rolf  
Mr. and Mrs. William J. Adler, Jr.  
Gerald O. Allen, M.D.  
Miss Frances A. Archer  
Ms. Lynn M. Armbruster  
Mr. Anthony J. Asher  
Theodore and Dona M. Ashton  
Mr. and Mrs. John C. Balliett  
Mr. Charles J. Beck  
Dr. and Mrs. George H. Belhobek, Jr.  
Dr. and Mrs. Gerald L. Berkshire  
Mr. Morris W. Beverage, Jr.  
Mr. and Mrs. Dennis A. Block  
Ms. Linda L. Bluso  
Ms. Margaret Anne Brosnan  
Mr. and Mrs. Harry F. Burkhardt  
Mr. and Mrs. Glenn G. Burneson  
Mr. and Mrs. David A. Camiener  
Mrs. Rita M. Carfagna  
Mrs. Ruth H. Cary  
Mr. Robert Craig  
Mr. and Mrs. James J. Crowley  
Mr. and Mrs. William R. Crowley  
Mr. and Mrs. Donald D. Davis  
Mr. Guido E. Di Geronimo  
Mr. Lee Di Geronimo  
Mr. and Mrs. Anthony DiGeronimo  
David and Karen Doll  
Ms. Rebecca Dooley  
Drs. Vichai and Patra Duangjak  
Dr. and Mrs. Victor W. Fazio  
Mr. Martin L. Flask  
Mr. and Mrs. Charles D. Fowler  
Mr. John M. Frazier  
Mr. and Mrs. Michael Garruto  
Mr. and Mrs. Robert M. Grebenc  
Ms. Janet M. Grout

Continued on next page.

\* Denotes deceased



**American  
Red Cross**  
of Greater Cleveland

## Clara Barton Society

*Continued from previous page*

Mr. and Mrs. Davin R. Gustafson  
Mr. Albert A. Hanes  
Mr. Robert E. Hanes  
Mr. and Mrs. Richard M. Hankins  
Mrs. Lois W. Hann  
Mike and Marti Hardy  
Mr. and Mrs. Michael Harrod  
Laura A. Hauser  
Mr. Theodore M. Henry  
Ms. Gretchen S. Hickok  
Mr. Gregory M. Higgins  
Mr. Wayne Hill  
Mr. and Mrs. Harry L. Holmes  
Mr. Thomas Houston  
Mr. Richard Huesken  
The Jack Family Foundation  
Mr. and Mrs. Donald M. Jack, Jr.  
Mr. Alastair J. Johnston  
Mr. and Mrs. Theodore T. Jones  
Mr. Dieter Kaesgen  
Mr. and Mrs. Andrew R. Kasle  
Ms. Katherine K. Kerr  
Mr. John S. Kim  
Judith and Bruce Klink  
Klink Family Charitable Trust  
Mr. Stephen J. Knerly, Jr.  
Mrs. Kimberly Kolz  
Mr. and Mrs. Raymond Kotecki  
Ralph and Terry Kovel Philanthropic Fund  
Mr. Walter P. Kremm, Jr.  
Mr. and Mrs. Werner J. Kretz  
Mr. and Mrs. Douglas B. Lamb  
Mr. and Mrs. Jeffrey S. Leavitt  
Dennis and Ginny Lehman  
Mr. and Mrs. Gregory P. Lieb  
Mr. and Mrs. Charles A. Liebenauer  
Mr. Jeffrey A. Litwiller  
Mr. John S. MacIntosh  
Mrs. Robert H. Martindale  
Ms. Vera N. McKinney  
Mrs. Pearl A. Metz  
Ms. Betteann Meyerson  
Mr. and Mrs. Gary Mincer  
Mr. and Mrs. Bernardo Moreno  
Mr. Thomas W. Morgan  
Rev. and Mrs. Otis Moss, Jr.  
Drs. Nelson and Ann Marie Mostow  
Ms. Molly A. Musca  
Ms. Sharon Mustee  
Mr. and Mrs. Randy S. Nelson  
Mr. and Mrs. Attila Nemeth  
Mr. and Mrs. Charles J. Nock  
Mr. and Mrs. David P. O'Brien  
Daniel B. Ornt, M.D. and Mrs. Jeanine Arden-Ornt  
Mr. and Mrs. Terry W. Owen  
Paintstone Foundation  
Mr. and Mrs. Zachary T. Paris  
Ms. Nancy E. Paton  
Janet M. Poponick, M.D.  
Ms. Jeanette M. Prince  
Mr. and Mrs. Albert B. Ratner  
Mr. and Mrs. Peter D. Rebar  
Mr. Andrew J. Rebholz  
Ms. Vicki Reed  
Mr. Scott S. Ricker  
Ms. Lisa Roberts-Mamone, Esq.  
Mr. Kay A. Rowland  
Katharine and Robert Ruhl

Dr. and Mrs. Gopal B. Saha  
Mrs. Victor E. Sandberg  
Cynthia and Richard Schulz  
Mr. and Mrs. John B. Schulze  
Mr. and Mrs. Charles C. Seaman  
Dr. and Mrs. Frank E. Seidelmann  
Mr. and Mrs. John R. Seifert  
Holly Selvaggi and Clark Harvey  
Mr. and Mrs. Mark T. Sibben  
Laura and Fareed Siddiq  
Mr. and Mrs. David A. Simko  
Ms. Mary S. Stevenson  
Mr. and Mrs. David L. Strah  
Ms. Lanie Strassburger  
Mr. and Mrs. Mark A. Strohmenger  
Mr. and Mrs. James E. Szabo  
Mr. and Mrs. Kenneth E. Taylor  
Ms. Emrie Thoresen  
Mr. and Mrs. Alfred J. Tolaro  
Triple T Foundation  
Boris Vinogradski, M.D.  
Mr. Patrick Walsh  
Mr. Jeffrey Weeden  
Capt. and Mrs. David W. Weidenkopf  
Mr. James W. Wert  
Ms. Mary K. Wilson  
Mr. Robert L. Wilson  
Mrs. Lynne B. Wiseman  
Ms. Margaret W. Wong  
Ms. Barbara J. Wright  
Mr. J. Adam Zangerle

## Samuel Mather Society

Samuel Mather, one of Cleveland's great industrial leaders and philanthropists, founded the Greater Cleveland Chapter in 1905. Membership in the Samuel Mather Society commences upon notification of an estate or deferred gift commitment to the Chapter.

Anonymous(5)  
Joseph Abrams\*  
Miss Doris W. Alburn\*  
Ms. Lola Altman\*  
Mrs. Betty M. Ambrose\*  
Peter and Jane Anagnostos  
Ms. Violet Anson\*  
Mrs. Edith G. Argue\*  
Mrs. Elizabeth L. Armington\*  
Ms. Esther M. Barega\*  
Ruth P. Barnard\*  
Anne R. Beavan\*  
Mr. Carl V. Berge\*  
Ruth W. Beutel\*  
May L. Beyer\*  
Edith M. Bindbeutel\*  
Mr. Robert E. Bingham\*  
Thomas L. Boey\*  
Mr. William H. Booth\*  
Mr. Paul R. Brahaney\*  
Mary Brainard\*  
Doris M. Brooks\*  
Doris and Steve D. Bullock  
Mr. Martin F. Bush\*  
Mrs. Irma E. Cacolic\*  
Mrs. Betty I. Campbell\*  
Martha B. Carlisle\*  
Ms. Ruth Anna Carlson

Florence Cellar\*  
Ms. Rose Ciotti\*  
Mrs. Jane Underhill Clough\*  
Ms. Dorothy A. Colbert  
Helen C. Cole\* Charitable Trust  
Mr. John J. Cook\*  
Mrs. Victoria M. Cooke\*  
Mrs. Laverne H. Croaning\*  
Mrs. Alma N. Crum\*  
Catherine Dalton\*  
Mrs. Jeanne R. Daus\*  
Brittiemart Davis\*  
Mrs. Virginia Dawes\*  
Marion S. Day\*  
Mr. David A. Denton  
Ms. Rose Dolhun\*  
Florence L. Donner\*  
Ms. Lucia M. Donner\*  
Miss Gertrude V. Ebeling  
Mr. Lewis B. Edwards\*  
Herman E. Ehlert\*  
Mrs. Herman H. Ellerbrock\*  
Mrs. Virginia B. Ellerbrock\*  
Phyllis M. Ellis  
Anne J. Erste\*  
Mrs. E. H. Eudy\*  
Helen Faber\*  
Mrs. Evelyn C. Faulkner  
Ms. Judith A. Feniger  
Mr.\* and Mrs. Alvin W. Fink  
Lucile Thompson Fleming\*  
Edna K. Fletcher\*  
Mrs. Marie Flowers\*  
Mr. and Mrs. Nicholas E. Frank  
Margaret J. Freeman  
Freeman F. Freitag\*  
Allen Sidney Fried\*  
Mrs. Ralph I. Fried  
Bertha C. Gaiser\*  
Mr. Archie Galloway\*  
Mrs. Sylvia Goldman\*  
Mrs. Barbara V. Gould\*  
Ms. Diane Smilanick and Mr. Mark R. Greenfield  
Mr. Oliver J. Grummit\*  
Mr. Joseph Guttman\*  
Sabina Habina\*  
Mrs. Lois Hagar\*  
Ms. Ruth V. Hagedorn\*  
Zella Hall\*  
Mrs. Dorothea W. Hamilton\*  
Ms. Charlotte R. Hansen\*  
Ms. Patricia A. Harrington  
Albert P. Heimsath\*  
Creda Heppe\*  
Mrs. Dorothy A. Herwat\*  
Gertrude C. Donnelly Hess\*  
Mr. and Mrs. Albert M. Higley, Jr.  
Mrs. Eleanor B. Hill\*  
Mrs. Mary C. Hill\*  
Grace M. Hoffman\*  
Dorothy L. Hofrichter\*  
Donald F. Hooton\*  
Laura A. Hugus\*  
Mr. and Mrs. Randall Hyde  
Mildred Imboden\*  
Mrs. Barbara W. Ingram  
Mrs. Adelaide V. Jaffe  
Miss Rose C. Jalovec  
Ceil Schwab Johnson and Theodore M. Johnson Foundation  
C. Gilman Johnston\*  
Mr.\* and Mrs. Frank E. Joseph Jr.

Grace Kaley\*  
 Betty J. Kane\*  
 Mr. and Mrs. Richard J. Kaplan  
 Emma Kimack\*  
 Laura King-Ellis  
 Mrs. Helene K. Klaus\*  
 Frances Kline\*  
 Dr. and Mrs. Gilles Klopman  
 Josephine Kmiotek\*  
 Ms. Margaret N. Kovell\*  
 Mr. and Mrs. Arthur W. Krause  
 Claude Krebs\*  
 Leone Krebs\*  
 Mrs. Margaret L. Krist\*  
 Ms. Jean Krizman\*  
 Alvina A. Kroll\*  
 Mrs. Dorothea F. Larsen\*  
 Dr. and Mrs. Richard H. Lash  
 Mr. Albert Leonetti  
 Dr. William M.\* and Mrs. Beryle\* LeSuer  
 Mr. Raymond J. Lewis  
 Harold C. Liebe\*  
 Harriet Hoy Lincoln\*  
 Frederick J. Lipp\*  
 Mrs. Agnes O. Litzel\*  
 Mrs. Anna H. Lowy\*  
 Mrs. Kathaleen R. Lube\*  
 Mr. David D. Ludwick  
 Joyce A. Lustig\*  
 Evelyn H. Lyons\*  
 Marie Buth Mahon\*  
 Marie S. Mahan\*  
 Mary I. Mann\*  
 Mrs. Mariane March\*  
 Ms. Carol S. Markey  
 Mrs. Iris Marshall\*  
 P. Gordon McAusland\*  
 Mr. William McEnneny\*  
 Charles McNeil\*  
 Carl Metz\*  
 Mr. Albert Michielli\*  
 Angela J. Milazzo\*  
 Mr. William J. Mische  
 Mrs. Mary B. Moon\*  
 Miss Martha M. Moore\*  
 Mrs. Josephine L. Morris\*  
 Dorothy Moysey\*  
 David\* and Inez\* Myers  
 Mrs. Marcella S. Nelson\*  
 Mr. Joseph J. Nemeth\*  
 E. Nedved\*  
 Harold B. Norris\*  
 Mr. John J. O'Brien\*  
 Agnes Pahlow\*  
 Sharron A. Patterson\*  
 Marie Petula\*  
 Nick J. Pokea  
 Dr. Alfred Politzer\*  
 Ms. Florence Z. Pollack  
 Ms. Rosemary E. Potokar  
 Paul G. Potter\*  
 Mr. George F. Qua  
 Mr. Joseph L. Randles\*  
 Miss Wilma Reid\*  
 Walter M. Reitz\*  
 Elizabeth C. Ring\*  
 Elizabeth F. Roeder\*  
 Mr. Edward L. Roscher\*  
 Gertrude P. Rose  
 Wilma Benes Rose\*  
 Mrs. Lillian Roth\*  
 William F. Roth  
 Harriett M. Roudebush\*

Alice Ruse\*  
 Ms. Dianna Rysko\*  
 Mr. Michael E. Sarly\*  
 William B. Saunders\*  
 Mr. Ivan Sawchyn\* and Mrs. Marsha K.  
 Sawchyn  
 Alice L. Scheetz\*  
 Mr. Frank F. Schueller  
 Florence Schultz\*  
 Mildred H. Schultz\*  
 Elmer Schwab  
 Mr. Jack Schwarzwald\*  
 Faye M. Shapero\*  
 Milton I. Shapero\*  
 Julia B. Shirak\*  
 Richard\* and Mary Jane\* Shively  
 Mr. Dov Shriro\*  
 Mr. and Mrs. Joseph O. Shuman  
 Ms. Marian G. Siegman\*  
 Delia Simandl\*  
 Jane E. Sinko\*  
 Ms. Kathryn M. Sirc\*  
 Sadie Mae Smith\*  
 Vivian N. Smith\*  
 Ms. Peggy Sobul  
 Mildred C. Sollenberger\*  
 Helen L. Spachtholz\*  
 Morton Spears\*  
 James E. Spitz\*  
 Esther R. Stern\*  
 Mrs. Elizabeth A. Stirling  
 Henrietta A. Stoker\*  
 Ronald M. Strachan\*  
 Ms. Lanie Strassburger  
 Mr. Albert Stratman\*  
 Miss Mary E. Sutphin\*  
 Ms. Jean H. Taber  
 Lillian Task\*  
 Dorothy F. Telling\*  
 William A. Teufel\*  
 Miss Pauline Thesmacher\*  
 Mr. Raymond Thoms  
 Marion Trattner\*  
 Mrs. Elizabeth M. Treuhaft\*  
 Arthur N.\* and Estell Jane\* Truhan  
 Ms. Doris Vadla  
 Howard J. Van Den Eynden\*  
 Ms. Mary R. Vargo\*  
 Anne M. Veil\*  
 Anna Marie Vogel\*  
 Charles N. Ward\*  
 Mr. and Mrs. Ronald J. Warzel  
 Mary E. Waterman\*  
 Sharon H. and Gregory A. Watts  
 Senta Weinberg\*  
 Miss Doris E. Weston\*  
 Mrs. Rose White\*  
 Mildred M. Whitelock\*  
 John S. Whittlesey\*  
 Mrs. Adeline C. Wiggins\*  
 Mr. Herbert Wooley\*  
 Mr.\* and Mrs.\* John A. Wootton  
 Mr. and Mrs. Marshall Wright  
 Allan R. Youngquist\*  
 George C. Zambounis\*  
 Mr. Chet Zielinski  
 Mr. Bill P. Zohos

## Endowed Funds of the Greater Cleveland Chapter

Named endowed funds of \$10,000 and more allow the Greater Cleveland Chapter to save lives and help people in our community in perpetuity. An endowed gift is a most significant investment in the future of our Red Cross Chapter.

Anonymous (1)  
 The Steve and Doris Bullock Endowment Fund  
 The Theodora P. Dakin Endowed Fund  
 The Milton T. and Jeanne R. Daus Fire Prevention Fund  
 The Lewis B. Edwards Endowed Public Relations Internship  
 Employees of the Greater Cleveland Chapter  
 The Higley Family Endowment Fund  
 The William N. Hulett II Endowed Fund  
 The Jane and Michael Horvitz Endowed Fund  
 The Jones Day Endowed Fund  
 The Betty Cutting Kenney Endowment Fund  
 The F.J. O'Neill Endowment  
 Operation Save-A-Life Endowment Fund  
 The Robert & Ellie Scheuer Endowment Fund  
 The Kent H. Smith Charitable Trust  
 The Pauline Thesmacher Endowment Fund  
 The Robert M. Zverina Health and Safety Fund

## Gifts-in-Kind

*Gifts of \$250 or more are listed*

Adcom Communications  
 Central Cadillac  
 Clear Channel Radio  
 Cleveland Browns  
 Cleveland.com  
 Cleveland Indians  
 Club Isabella  
 Consolidated Graphics Group  
 Crop Bistro  
 Anthony Decello and Rebecca Zuti  
 Deep Springs Trout Club  
 Fire, Food and Drink  
 Lists Across America, Inc.  
 Mr. and Mrs. Edward C. Martinelli  
 Dr. Maria Pujana and Mr. Hugo Urizar  
 Rob and Lisa Reynolds  
 Sears- Solon #5539  
 Uppercut Motion and Sound  
 Ver-A-Fast Corporation

\* Denotes deceased



**American  
Red Cross**  
of Greater Cleveland

## Individual Gifts

We are grateful for the generosity of the many individuals and family foundations who contributed to the American Red Cross of Greater Cleveland in 2010/2011. Gifts between \$250 and \$999 are listed

### Individuals \$500 - \$999

Anonymous(7)  
Mr. and Mrs. Pete J. Accorti  
Mr. John Adamo  
Mr. and Mrs. Joseph C. Adams  
Mr. and Mrs. Jerry A. Ahmed  
Mr. Donald G. Allen  
Ms. Nicola Ammons  
Mr. and Mrs. Frank Awender  
Mr. Joseph S. Bak  
Ms. Bettie J. Baker  
Mr. and Mrs. Ronald C. Baumberger  
Ms. Lorraine R. Baumgardner  
Mr. and Mrs. James L. Bayman  
Ralph M. Beattie Trust  
Mr. Ralph M. Beattie  
Mr. Patrick Bennett  
Ms. Vida Berlec  
Ms. Anne E. Bomar  
Ms. Krystyna Boniewicz  
Mr. Stephen Brooks  
Drs. Jeanette Grasselli Brown and Glenn R. Brown  
Mr. Thomas A. Caine  
Ms. Beverly K. Campbell  
David and Ginger Campopiano  
Ms. Ruth Anna Carlson  
Amy and Brian D. Catlett  
Mr. and Mrs. Donald L. Cawein  
Mr. and Mrs. Richard J. Clark, Jr.  
Ms. Melanie L. Clark  
Mr. and Mrs. Paul Clark  
Mr. William R. Crotser  
Mr. Gerard R. Crouse  
Mrs. Sharon C. Currier  
Dr. and Mrs. Gerard A. DeOreo, Jr.  
Mr. Armand Di Geronimo  
Robert and Suzanne Dills  
Mr. and Mrs. Kevin M. Doherty  
Ms. Daniel P. Douds  
Ms. Mary P. Dougherty  
Marilyn D. Duge  
Richard and Susan Elder  
Mr. and Mrs. Jack B. Esgar  
Mr. and Mrs. Robert B. Evans  
Mr. James P. Even, Jr.  
Mr. Marc Feldman  
Ms. Helen M. Finn  
Mr. and Mrs. Bill J. Gagliano  
Mr. and Mrs. Donald W. Games  
Mr. Michael J. Gaynier  
Mr. Michael J. Gebura  
Mrs. Betty L. Gordon  
Mr. and Mrs. Michael J. Gordon  
Mr. and Mrs. James F. Gottschalk  
Mr. and Mrs. Gary K. Graeff  
Alvin, Lottie and Rachel Gray Fund  
Mr. and Mrs. Isaac Greber  
Ms. Mary R. Gygli  
Mr. and Mrs. Edward Hadaway  
Ms. Donna L. Harland-Gerenda  
Mr. and Mrs. James B. Hayes, Jr.  
Mr. John Hecker  
Mr. Eoin D. Herlihy  
John D. Hines, M.D.  
Mr. and Mrs. Gerald F. Hoch II  
Mr. Richard G. Householder  
Mr. and Mrs. Raymond R. Husted  
Mrs. Loraine M. Huston

Mr. and Mrs. Willard W. Jett  
Mrs. Emma E. Jochum  
Mr. Jeffrey R. Kalata  
Ms. Susan D. Keough  
Mr. Theodore M. Keuchel  
Mr. and Mrs. Steven R. Kinnett  
Ms. Linda F. Kleis  
Ms. Hildegard Klimek  
Mr. James A. Kline  
Mr. Stanley W. Kline  
Mr. and Mrs. Paul I. Kolaric  
Ms. Kathryn Kraus  
Ms. Mary E. Kredel  
Mr. and Mrs. Charles E. Krejci  
Mr. Richard L. Kretschan  
Mr. Leonard A. Krynski  
Ms. Mary F. Laird  
Mr. Bruce W. Lang  
Mr. and Mrs. John S. Larson  
Ms. Louann R. Lauer  
Mr. and Mrs. Wade Leaman  
Mr. Albert Leonetti  
Mr. John B. Lewis  
Mr. and Mrs. Richard A. Little  
Ms. Vivian R. Louis  
Dr. and Mrs. Gilbert Lowenthal  
Ms. Deborah A. Malden  
Mr. and Mrs. Joel D. Marx  
Mr. and Mrs. Robert E. Maskulka  
Ms. Cynthia M. Matson  
Wendy+ and David Matthews  
Ms. Melissa McCall  
Mr. Brian T. McGrath  
Earle and Helen McGraw  
Mr. and Mrs. Gregory T. MacLennan  
Mr. and Mrs. Gregory P. McNulty  
Mrs. Anna L. McWilliams  
Ms. Elizabeth Michalski  
Miller Family Fund  
Mr. and Mrs. William F. Miller III  
Mr. Harlan D. Miller  
Mr. William M. Mills  
Mr. and Mrs. Curtis E. Moll  
Mr. and Mrs. Robert A. Mondok  
Mrs. Nancy C. Morgan  
Mr. and Mrs. Matthew J. Morrison  
Mr. Leonard M. Muni  
Ms. Michelle Newland  
Mr. and Mrs. William P. Ober  
Mr. Guy O'Hair  
Louisa S. Oliver  
Mr. Daniel L. Owens  
Mr. Douglas Parobek  
Mrs. Dorothy L. Phillips  
Ms. Traci L. Pinkney  
Dr. and Mrs. John J. Plucinsky  
Mr. and Mrs. David P. Porter  
Maria Pujana and Hugo Urizar  
Mrs. Martha O. Rand\*  
Rob and Lisa Reynolds  
Mr. Peter W. Richer  
Mr. John Rife  
Mr. John Robinson  
Mr. and Mrs. Eric V. Roegner  
Mr. and Mrs. Kenneth Rosen  
Mr. and Mrs. William E. Rosenberg, Jr.  
Mr. and Mrs. John A. Rowland  
Mrs Dorothy M. Sawyer  
Miss Judith B. Schneider  
Mr. and Mrs. Lewis R. Sherman  
Mr. and Mrs. David G. Shumway  
Mr. Daniel M. Singer  
Mr. and Mrs. David S. Snapp  
Ms. Peggy Sobul  
Anthony Stallion, M.D.  
Mrs. Nancy L. Stansbury  
Mr. and Mrs. Anthony R. Suever  
Ms. Patricia F. Sweeney

Dr. Alan A. Tambe  
Mr. and Mrs. Richard G. Teagno  
Mr. and Mrs. John C. Thesken  
Mary A. Thomas, M.D.  
Dr. and Mrs. Pierre L. Triozzi  
Mr. and Mrs. Terence J. Uhl  
Ms. Doris Vadla  
Ms. Patricia Van Pelt  
Mr. Brent D. Vanderheide  
Dr. and Mrs. Plakkat K. Velayudhan  
Mr. Carl G. Vinson, Jr.  
Mr. and Mrs. John H. Vinton  
The Honorable William F. B. Vodrey  
Mr. and Mrs. Almar T. Widiger  
Mr. Jeffrey Williamson  
Mr. James Willson  
Ms. Elizabeth J. Wirstrom  
Marshall and Lind Wright  
Ms. Theresa Zalewski  
Ms. Danielle T. Zembower

### Individuals \$250 - \$499

Anonymous(5)  
Mr. Gary J. Abram  
Mr. Carl R. Alexander  
Mr. and Mrs. Ernest E. Allen  
Mr. and Mrs. John C. Angus  
Robert H. Anschuetz, M.D.  
Mrs. Lois C. Armington  
Mr. and Mrs. Robert H. Arnold  
Mr. and Mrs. Rimantas R. Aukstuolis  
Mr. Max J. Aynik, Jr.  
Mr. and Mrs. Troy D. Bagshaw  
Ms. Kristen Baird Adams  
Mr. Torrance Baker  
Mr. Ronald J. Balishin  
Dr. and Mrs. David S. Bamberger  
Mr. and Mrs. Kevin D. Barnes  
Mr. and Mrs. Vincent E. Barra  
Mrs. Doris M. Bartlett  
Mr. James S. Baskey  
Ms. Gertrude Beclay  
Mr. and Mrs. Christopher W. Bellamy  
Mr. and Mrs. Steven Belman  
Michael and Andrea Bender  
Mr. Cipriano S. Beredo, Jr.  
Mr. William W. Berger  
Mr. Tom Bernot  
Mr. Henry Blair  
Mr. Jonathan Blakely  
Mrs. Mary L. Blalock  
Mr. Charles P. Bolton  
Mr. and Mrs. William S. Brooks  
Ms. Mary A. Bruner  
The John and Barbara Burns Foundation  
Mrs. Angela O. Cabell  
Mr. Victor A. Canacci  
Ms. Kathleen D. Canepa  
Mr. and Mrs. Michael F. Caputo  
Dr. and Mrs. Joseph B. Carter  
Mr. and Mrs. William B. Chamberlin III  
Ms. Karen A. Charnigo  
Ms. Eleanor M. Childress  
Mrs. Jeanette M. Chitester  
Ms. JoAnn M. Clark  
Mr. and Mrs. Grant Cleveland  
Kenneth and Harriet Coeling  
Mrs. Ruth E. Coleman  
Ms. Norma Collin  
Mrs. Richard A. Cook  
Mr. Alan L. Corbitt  
Mr. Daniel E. Cox  
Mr. and Mrs. Walton Cox, Sr.  
Mr. and Mrs. Anthony Coyne  
Mr. and Mrs. Edward R. Cromling  
Ms. Janet Dannemiller  
Mr. and Mrs. Stanley D. Dannemiller  
Mr. and Mrs. James D. Darrow  
Mr. John E. Davies  
Mr. Harold H. Davis  
Mr. and Mrs. William R. Davis

Mr. and Mrs. Alfred W. Daviso  
Mr. and Mrs. Darrell D. Deerberg  
Ms. Barbara L. Defratis  
Mr. and Mrs.+ Frank DelMonico, Jr.  
Mr. and Mrs. Paul G. DePompei  
Mr. Vincent J. DiCaprio  
Mr. and Mrs. Lester R. Dickard  
Mr. and Mrs. Roscoe A. Dickerson  
Dr. and Mrs. Paul E. DiCorleto  
Mr. James A. Dingus, Jr.  
Dr. and Mrs. Morris S. Dixon, Jr.  
Mr. Samuel Dolinsky  
William T. Doyle, Esq.  
Mrs. Jeanne C. Drusendahl  
Ms. Judith A. Eckelmeyer  
Ms. Emily Ellington  
Ms. Holly M. Engel  
Shahpour Esfandiari, M.D.  
Ms. Renee F. Evans  
Mrs. Eleanor E. Everett  
Mr. Gene A. Faubel  
Ms. Judith A. Feniger  
Ms. Marcia A. Fenner  
Mrs. Dolores M. Fink  
Mr. Robert S. Finkelhor  
Mr. and Mrs. Joseph M. Flannery  
Mr. and Mrs. Anthony C. Foos  
Mr. and Mrs. Robert B. Ford  
Dr. William E. Forsythe, Jr.  
Mrs. Jean T. Fort  
Ms. Linda L. Fousek  
Mrs. Mariellen K. Frank  
Mr. and Mrs. Kevin M. Gale  
Mr. Thomas Gannon  
Ms. Alma M. Gaughan  
Ms. Helen M. Gebura  
Mr. and Mrs. Michael A. Gedeon  
Mr. and Mrs. Paul M. Gentzel, Jr.  
Ms. Tobin Gibbons  
Mr. Joseph Gibson  
Mr. and Mrs. Scott R. Gillespie  
Mr. and Mrs. Ted W. Goble  
Mr. and Mrs. Allan R. Goellner  
Ms. Patricia F. Gollmar  
Mr. and Mrs. Ruffin Graham  
Mr. and Mrs. Arthur F. Greene, Jr.  
Mr. Richard L. Greiner  
Ms. Lynn-Ann Gries  
Mr. and Mrs. Robert D. Gries  
Mr. Brian Guess  
Mr. Alan R. Gurd  
Ms. Hattie F. Hairston  
Charles P. Hallock Trust  
Mr. Theodore A. Handel  
Mrs. Helen L. Haren  
Ms. Patricia A. Harrington  
Ms. Sandra M. Harwood  
Sharon Herene & Thomas H. Barnard III  
Mrs. Louise B. Herrick  
Miss Carolyn A. Herrmann  
Mr. and Mrs. George Hicks  
Mr. Charles N. Hirsch  
Dr. James Hoflinger  
Mr. Mont C. Hollingsworth  
Mr. and Mrs. John B. Hollister, Jr.  
Mr. and Mrs. David J. Holz  
Mrs. Donna C. Hom  
Ms. Donna Hood  
Mr.+ and Mrs. Ronald M. Horvat  
Mr. and Mrs. Kenneth D. Hoskins  
Mr. Seth D. Hothem  
Mr. and Mrs. Timothy Hughes  
Ms. Beth Hunsicker  
Mr. and Mrs. David B. Jacobs  
Mr. and Mrs. Gerald W. Janosek  
Mr. Dale M. Jarzembak  
Ms. Jacqueline Johnson  
Mr. Gary A. Jokela  
Mr. and Mrs. John Jonscher  
Mr. Steven B. Kaback  
Mr. and Mrs. Hartmut Kaesgen

Mr. Jack L. Karn  
Mr. David W. Kauf  
Mr. and Mrs. Edmund G. Kauntz  
Mrs. Carolyn A. Kean  
Ms. Judith Kean  
Ms. Elizabeth M. Keegan  
Mr. and Mrs. Fred D. Kidder  
Mr. Terrence M. Kilcoyne  
Mr. and Mrs. Benjamin A. King  
Mr. Stephen F. Kirk  
Mr. Peter Klein  
Mr. and Mrs. Mark D. Klem  
Mr. and Mrs. Timothy J. Kleppel  
Mrs. Theresia G. Kline  
Mr. Eugene A. Klingshirn  
Mr. Joseph P. Klinkovsky  
Ms. Kathy S. Koch  
Mrs. Carolyn Kodramaz  
Trust Agreement of Patricia A. Koenig  
Mr. and Mrs. Frank J. Koenig  
Mr. and Mrs. Joseph F. Krakora  
Mr. Leo Krejci  
Ms. Joan M. Kriikku  
Mr. and Mrs. Kenneth J. Kristoff  
Mr. William C. Kroll  
Mr. Sam Kuchta  
Mr. Peter A. Kuhn  
Dr. and Mrs. Robert S. Kunkel, Jr.  
Mr. and Mrs. T. A. Laufik  
Mr. John Lebold  
Mr. and Mrs. Tom E. Leib  
Mrs. Barbara Lewis  
Mr. Robert S. Lewis  
Mr. and Mrs. William S. Lindblad  
Mr. and Mrs. Carl F. Lorenzo  
Dr. and Mrs. Bruce M. Lowrie  
Dr. and Mrs. Armand R. Lucas  
Mr. Jeffrey R. Luken  
Mr. and Mrs. William M. Malley  
Mr. and Mrs. William Marconi  
Mr. John Markovich  
Mr. Earl Martin  
Ms. Angela M. Marton-Crego  
Mr. Richard C. Masek  
Mr. James E. Matzinger  
Mr. and Mrs. William L. Mau  
Mrs. Joyce F. Maurer  
Mrs. Nicole V. Mawby  
Mr. and Mrs. Richard S. Mayer  
Mr. and Mrs. Robert W. Mayer, Jr.  
Mr. Robert L. McDonough  
Ms. Susan McGowan  
Ms. Joan E. McKnight  
Mr. and Mrs. James McMillan  
Ms. M. C. McSweeney  
Mr. and Mrs. Arthur G. Merriman, Jr.  
Miss Jane E. Mesnard  
Mr. and Dr. Charles J. Mintz  
Mr. and Mrs. James P. Mockler  
Mrs. Linda Moran  
Mr. Bruce Motika  
Mr. Phillip S. Muhlfelder  
Mr. Robert Myers  
Mr. and Mrs. David R. Nagusky  
Mr. Alfred Ogella  
Mr. and Mrs. Eugene O. Orynczyk  
Mr. and Mrs. Victor R. Osmialowski  
Mr. and Mrs. A. G. Palmer, Jr.  
Mr. Robert J. Paulsen  
Mr. and Mrs. Terry Pfeleiderer  
Mr. and Mrs. John S. Piety  
Mr. and Mrs. Robert F. Pincus  
Ms. Heather A. Pitts  
Mr. Dennis J. Polefko  
Ms. Elizabeth R. Porcello  
Mr. David Presser  
Ms. Kathleen P. Quealy  
Ms. Elizabeth Quinn  
Mr. Jack L. Ragin  
Mr. and Mrs. Harvey M. Relman

Mr. and Mrs. Charles B. Rich  
Mr. and Mrs. Bernard J. Riley  
Mr. and Mrs. Rex Robbins  
Mrs. Brenda S. Robinson  
Mr. and Mrs. Harold T. Ross  
Mr. and Mrs. Kenneth L. Rosser  
Mr. and Mrs. Peter C. Rubin  
Mrs. Iris R. Rubinfeld  
Mrs. Barbara P. Ruhlman  
Mr. James Ryan  
Mrs. Norma Saffold  
Mr. John A. Sakaley  
Ms. Elizabeth S. Scher  
Ms. Sara A. Scheuer  
Ms. Lenore M. Schneider  
Mr. Eckard Scholtz  
Ms. Jeanette L. Schroeder  
Mr. Lawrence F. Schumann  
Mr. and Mrs. Raymond H. Schurr  
Ms. Marcella J. Schweter  
Ms. Belinda Scott  
Mr. John C. Scott  
Mr. Terrence J. Scott  
Robert and Jean Seaton  
Ms. Mary Ann Sedlak  
William J. and Marie K. Sedlecky  
Mr. and Mrs. Robert Seibel  
Ms. Beth B. Sersig  
Mrs. Ilene L. Shaw  
Robert H. Silverman, M.D.  
Mr. Donald A. Simko  
Mr. Arthur W. Simpson  
Mr. and Mrs. Donald F. Smith  
Mr. and Mrs. Duane A. Smith  
Mr. and Mrs. Nathaniel Spaeth  
Mrs. Helen Spangenberg  
Brooke E. Spector  
Mrs. Doris D. Sprong  
Mr. Carl J. Stelbasky  
Mr. and Mrs. William J. Stern  
Mr. Donald G. Stonebrook  
Ms. Edith Stoudmire  
Mr. Steven Swanson  
Mrs. Anne H. Szabo  
Mr. and Mrs. Robert W. Tansing  
Mr. Linford L. Tapp  
Mrs. Mary J. Tatman  
Ms. Carolyn Tolan  
Ms. Janice L. Tommer  
Mr. and Mrs. Edward W. Tornberg  
Mrs. Laura Toth  
Mr. Terry W. Troup  
Ms. Arleen M. Turk  
Mr. and Mrs. James D. Vail  
Mr. and Mrs. Ernest R. Vargo  
Mr. Robert W. Varley  
Dr. and Mrs. Thomas R. Vrobel  
Ms. Dana Wade  
Mr. Luther C. Wallace  
Mr. Jonathan J. Ward  
Mr. and Mrs. Ronald J. Warzel  
Mr. Hal F. Weaver  
Mr. Robert H. Weber, Sr.  
Mr. and Mrs. Albin J. Weiler  
Ms. Margaret G. Weitzel  
Mrs. Kay S. Wellman  
Mr. and Mrs. Warren S. Wernick  
Dr. and Mrs. Peter Whitehouse  
Mr. and Mrs. Charles D. Whitmer  
Ms. Sondra C. Williams  
Mr. Andrew J. Winzer  
Mr. and Mrs. Daniel J. Wojtila  
Ms. Margaret M. Wolf  
Mr. Kim C. Yeager  
Ms. Philippa B. Yin  
Ms. Elizabeth A. Young  
Mr. Steven Zablotney  
Mrs. Betty R. Zeiger  
Mr. Richard G. Zeiger  
Mr. Gerald Zelenka

## Corporations, Foundations, Associations and Government

Special thanks to United Way Services, which contributed over \$800,000 in support to the Greater Cleveland Chapter in 2010-2011.

We also appreciate the generosity of the many corporations, foundations and associations which contributed to the American Red Cross, Greater Cleveland Chapter during the 2010-2011 fiscal year. Gifts of \$250+ are listed.

### **\$100,000+**

The Cleveland Foundation  
United Way of Greater Cleveland

### **\$50,000 - \$99,999**

The FirstEnergy Foundation  
United Way of Ashland County  
United Way of Lake County

### **\$25,000 - \$49,999**

Eva L. and Joseph M. Bruening  
Foundation  
Cleveland Clinic  
Deaconess Community Foundation  
The Lubrizol Foundation  
PNC Bank  
Technical Consumer Products Inc.

### **\$10,000 - \$24,999**

Anonymous(1)  
Allied Witan Co.  
Applied Industrial Technologies  
ArcelorMittal USA  
B Lee Systems LLC  
Bicknell Fund  
Cavaliers Youth Fund of the McCormick  
Tribune Foundation  
George W. Codrington Charitable  
Foundation  
Dominion Foundation  
Eaton Charitable Fund  
Nationwide Insurance Company  
The Park Foundation  
Plain Dealer Charities, Inc.

### **\$5,000 - \$9,999**

Dominion East Ohio  
Gannett Foundation  
The Lincoln Electric Foundation  
Mont Granite, Inc.  
The S.K.Wellman Foundation  
The Sherwick Fund  
The Sherwin-Williams Foundation

### **\$2,500 - \$4,999**

Charter One  
Continental Business Enterprises, Inc.  
Dealer Tire LLC  
Eaton Corporation  
Harry K. and Emma R. Fox Charitable  
Foundation  
The Louise H. and David S. Ingalls  
Foundation  
OH Technologies, Inc.  
Parker Hannifin Corporation

### **\$1,000 - \$2,499**

Anonymous(1)  
Beverage Distributors Inc.  
BNY Mellon Powering Potential Fund  
ChemDevelopment  
Christ Church  
DDR Corp  
Falcon Industries, Inc.  
Falcon Tool Company, Inc.  
KeyBank Foundation  
KeyBank  
KPMG LLP  
Kulas Foundation  
Majestic Steel USA  
The Martindale Electric Co.  
Microsoft  
Mohican Area Community Foundation  
Nestle Foundation  
Prince & Izant Co.  
The Prudential Foundation  
Sunset Industries Inc.  
Tri Vantage LLC  
Wal-Mart Foundation

### **\$500 - \$999**

Agave Crocker Park LLC  
Alliance of Transylvanian Saxons  
American Red Cross, Northern Ohio  
Blood Services Region  
GRG Trucking Company Inc.  
Ohio Permanente Medical Group  
Rakesh Ranjan, M.D. & Associates, Inc.  
Samaritan Reginal Health System  
Sheoga Hardwood Flooring & Paneling Inc.  
The Sherwin-Williams Women's Club  
Signum Incorporated  
Tendon Manufacturing, Inc.  
United Way of Summit County

### **\$250 - \$499**

Association of Fundraising Professionals  
Automatic Data Processing, Inc.  
Berresford Brokerage L.L.C.  
Cleveland Turner's STV  
Cuyahoga County Probation Department  
The Gap Foundation  
Goodrich Foundation  
Maria Heckaman & Associates, Inc.  
Medco Health Solutions Charitable  
Match Fund  
Nordson Corporation Foundation  
Ohio Concrete Resurfacing, Inc.  
OppenheimerFunds Legacy Program  
REIT Management & Research LLC  
Savannah Lions Club  
The Islander Company  
United Way of Greater Lorain County  
Wasacz & Skvoretz Ltd.

## In Honor of, In Memory of

**In Memory of Doug Adkinson**  
Mr. and Mrs. Richard W. Shaver

**In Memory of Luming Banaga**  
Mr. and Mrs. Samuel P. Miranda

**In Memory of Danny Bauml**  
Mr. and Mrs. Eugene L. Geller  
Mr. and Mrs. Sanford R. Kalman  
Mr. and Mrs. Gerald S. Levy  
Mr. and Mrs. Irwin M. Sobul  
Ms. Peggy Sobul  
Ms. Judith L. Tursic  
Ms. Margarete L. Vertal  
Mr. and Mrs. Gene Wolsky

**In Memory of Inayat Begum**  
American Greetings

**In Memory of Theodore Blabey**  
Mrs. Jill Blabey  
Ms. Emma J. Dinsmoor and  
Ms. Rhonda L. Schuler  
Mr. and Mrs. Stephen C. Reese  
Ms. Denise A. Rowland

**In Honor of Robert Blasse**  
Mr. and Mrs. William E. Curschman

**In Memory of Dan Bollinger**  
Mrs. Marilyn Bollinger

**In Honor of Kathryn Brickner**  
Drakes Bay Fundraising Inc.

**In Memory of Mary Brusse**  
Ms. Mary Ann Duwe

**In Memory of Bernard Busser**  
Violet F. Busser

**In Memory of Everett Chitester**  
Mrs. Jeanette M. Chitester  
Mr. and Mrs. Rick Farley  
Mr. Jerome Roberts

**In Memory of June Cornell**  
Joanne M. Cornell and Sandy Ruddle  
Mr. and Mrs. Terry P. Cornell  
Ms. Pamela S. Lindley  
Mr. and Mrs. Ramin A. Meshginpoosh  
Ms. Marilyn Reese  
Mr. and Mrs. Edward G. Sency, Jr.  
Mr. and Mrs. Michael E. Teschke

**In Memory of Peter Corrigan**  
Mr. Wilfredo Crespo

**In Memory of Helen Coy**  
Mrs. Marilyn Bogart

**In Memory of John D'Ettorre**  
Mr. and Mrs. Thomas B. Hardy  
Mr. and Mrs. Richard J. Lang

**In Memory of David Dworken**  
Ms. Maxine S. Birrer

**In Honor of Jeanne and Bob  
Drusendahl**  
Mr. and Mrs. Keith A. Jenkins

**In Honor of David Evans**  
Ms. Barbara T. Swartz

***In Memory Jim Factor***

Ms. Carol Betts

***In Memory of Marilyn Fisher***

Mr. and Mrs. Don Poole

***In Honor of Mary-Alice Frank***

Mr. and Mrs. Howard J. Tuber

***In Memory of Dean Good***

Ms. Janet L. Clymer

***In Memory of Marie Gravatt***

Ms. Gayle M. Comstock  
Ms. Joan H. Dushane  
Ms. Diane A. Kavan  
Mr. Marvin Union

***In Memory of Marcia Halpert***

Mr. and Mrs. Earl R. Agin  
Mrs. Beverly Bedol  
Mr. and Mrs. Michael Charna  
Mr. and Mrs. Stuart Herz  
Mr. and Mrs. Ervin C. Lipps  
Newspaper Holdings Inc.  
Mr. and Mrs. John E. Ridilla  
Mr. and Mrs. Michael Shapero

***In Memory of John Hannon***

Mrs. Ethel M. Quinlan

***In Memory of Louise Henderson***

Mr. and Mrs. Joseph S. Katoch

***In Memory of Edward Hetman***

Adcom Communications

***In Memory of Pearl Hill***

Ms. Elizabeth G. Rhines

***In Memory of Kal Hoffman***

Mr. and Mrs. John Lekan

***In Memory of Nancy Hutchins***

Eaton Corporation

***In Honor of Chris Hyland***

Brad Roller and Laura Pedersen  
Philanthropic Fund

***In Memory of William and Mildred A. Joswiak***

Violet F. Busser

***In Memory of Mae Krysciak***

Mr. and Mrs. Alec Eaton  
Mr. and Mrs. Dennis Kaminski  
Ms. Nancy Knowlton  
Mr. and Mrs. Gilbert Koch  
Mr. and Mrs. James M. Kuzmick  
Mrs. Judith Okress  
Mr. and Mrs. Thomas Okress  
Mr. and Mrs. Warren L. Remein  
Mr. and Mrs. John W. Shallcross  
Mr. and Mrs. Jeffrey A. Zimlich

***In Memory of Mary Lou Moffett***

Mr. and Mrs. Randall E. Jacobs

***In Memory of Ed Muraski***

Mr. and Mrs. Keith A. Fenske

***In Honor of Dottie Nechvatal***

Mr. and Mrs. James Martin

***In Memory of Marcella Nelson***

Jerry and Jerry Anne Keown

***In Memory of Pauline Nystrom***

Mr. and Mrs. Wayne M. Snyder

***In Memory of Isabelle Parker***

Mr. and Mrs. David Fisher

***In Memory of Raymond Paskert***

Mr. and Mrs. Kenneth F. Bakoss  
Mr. and Mrs. Ralph W. Deter  
Mr. and Mrs. Charles N. Kaltenbach  
Mr. and Mrs. John F. Kerr  
Mr. and Mrs. Timothy J. King  
Mr. and Mrs. Walter Krawulski, Jr.  
Mr. and Mrs. Edwin F. Langhenry  
Ms. Ann McAulay  
Mr. and Mrs. Gilbert N. McGee  
Mr. and Mrs. Richard K. Morycz  
Mr. and Mrs. Leonard Ponessi  
St. Raphael Guild  
Jane R. Stroomer Trust  
Mr. and Mrs. John Szy  
Mr. and Mrs. Al Zupan

***In Memory of Robert Pearlman***

Mr. and Mrs. Edward Klineman

***In Memory of John Petti***

Ms. Holly M. Engel

***In Memory of Jules Rasoletti***

Ms. Barbara Brooks

***In Memory of Timothy Reid***

Mr. and Mrs. Salvatore C. Apicella  
Ms. Cindy J. Bowman  
Mr. and Mrs. William Butler  
Mr. and Mrs. Gary L. Crew  
Mr. and Mrs. David K. Edwards  
Mr. and Mrs. David N. Halverstadt  
Mr. David W. Johnson  
Mr. and Mrs. Daniel J. Meyers  
Ms. Elizabeth M. Pesch  
Salem Community Hospital  
Mr. and Mrs. Bohdan Samokyszyn  
Ms. Karen A. Sebo  
Mr. and Mrs. Terry J. Smith  
Ms. Rose M. Taylor  
Ms. Dora L. Treleven  
Mr. and Mrs. Larry W. Whiteleather  
In Memory of Bill Reider  
Mr. and Mrs. Richard E. Huntoon

***In Memory of Mary Roelle***

Mr. Fred J. Billock, Jr.

***In Honor of Daniel Rudman***

Ms. Lauren E. Rudman

***In Memory of Roni Rupert***

Mr. Christopher J. Rupert

***In Memory of Ruth Skehan***

Mr. and Mrs. Richard Discipio  
Mr. and Mrs. Frederick O. Leyba  
Mr. and Ms. Abelino Lopez, Jr.  
Mr. John McHale  
Dejan Petrovic  
Pinshooters Golf League  
Mr. and Mrs. Steve Schwandt  
Mr. and Mrs. Carl M. Shaheen  
Mr. and Mrs. David Smik  
Mr. James R. Turner  
Ms. Paula Wiemer  
The Zarko Family



***In Honor of Kathy Skladany***

Mrs. Susan M. Winn

***In Honor of Peggy Sobul***

Ms. Jan R. Wolf

***In Memory of Franklin Spilker***

Parker Hannifin Corporation

***In Memory of Angeline Stankiewicz***

Mrs. Charetta T. Harrington

***In Honor of Duane Switzer***

Dr. and Mrs. Richard Corradi

***In Memory of Betty Ann Thompson***

Mr. and Mrs. Jeffrey A. Barina  
Mr. and Mrs. Anthony Ciresi  
Dr. and Dr. M.J. Cooper  
Mr. and Mrs. David C. Crowley  
Ms. Janet L. Crowley  
Mr. and Mrs. Daniel A. Dziedzic  
Ms. Lisa L. Howell  
Mr. and Mrs. Terrance E. Mahon  
Mr. James Naso  
Mr. and Mrs. David Potts  
Mr. and Mrs. Iain Walker  
Ms. Carole A. Yurek

***In Honor of Margaret Treois***

Ms. Ruth Rubin

***In Memory of Edward Yambor***

Plantscaping, Inc.

\* Denotes deceased



**American  
Red Cross**

of Greater Cleveland



**2011 Hero Awards of Greater Cleveland**

## Special Events

Gifts of \$250 or more that were made in support of an American Red Cross of Greater Cleveland special event.

### **\$25,000+**

Adcom Communications  
PNC Bank

### **\$10,000 - \$24,999**

Cleveland Cavaliers/ Quicken Loans Area  
Cleveland Clinic  
Fifth Third Bank, Northeastern Ohio  
KeyBank Foundation  
Medical Mutual of Ohio  
The Shamrock Companies  
University Hospitals of Cleveland

### **\$5,000 - \$9,999**

Anonymous(1)  
Alcoa  
Aleris International, Inc.  
American Greetings  
AT&T  
DDR Corp  
Dominion East Ohio  
Jones Day  
Lubrizol Foundation  
McDonald Hopkins LLC  
Oatey SCS  
Oswald Companies  
Porter Wright Morris & Arthur LLP  
The Sherwin-Williams Company  
Squire, Sanders & Dempsey LLP  
Ulmer & Berne LLP

### **\$2,500 - \$4,999**

Berea Children's Home and Family Services  
Cleveland Indians  
Collection Auto Group  
Fairmount Minerals Foundation  
The FirstEnergy Foundation  
Forest City Enterprises  
The Glenmede Trust Co.  
Great Lakes Power Products  
Hahn Loeser + Parks LLP  
KPMG LLP  
Lake Hospital System Inc.  
Lakeland Community College  
Nationwide Insurance Company  
Pat Catan's Craft Centers  
Mr. and Mrs. Richard W. Pogue  
Prusa Construction LLC  
Roetzel & Andress LPA  
Sports Time Ohio  
Terrace Construction Company, Inc.  
Utilities Construction Company  
The Wernick Wealth Management Group of Wells Fargo Advisors  
Frann Zverina

### **\$1,000 - \$2,499**

Anonymous (3)  
American Red Cross, Northern Ohio Blood Services Region  
Applied Industrial Technologies  
The Austin Company  
Ms. Linda L. Bluso  
BNY Mellon Wealth Management  
Charter One  
The Chubb Corporation  
Cohen & Company  
Discoverhelp, Inc.  
David and Karen Doll  
Donley's Inc.  
Fahlgren, Inc.  
First Merit Bank Corporation  
The Frank Agency Inc.  
Laura A. Hauser  
Hawthorn, PNC Family Wealth  
The Albert M. Higley Company  
Howard Hanna Real Estate Services  
HPM Partners LLC  
Huntington National Bank  
Mr. and Mrs. Andrew Kartalis  
Kohrman, Jackson & Krantz PLL  
Kulas Foundation  
Ladies Auxiliary FOE  
Laurie J. Laidlaw  
Lake County Captains  
Lake Erie College  
The Lincoln Electric Foundation  
Majestic Steel USA, Inc.  
Maple Leaf Community Residences Inc.  
Marous Brothers Construction  
Meritech  
Rev. and Mrs. Otis Moss, Jr.  
Northern Ohio Golf Charities Foundation, Inc.  
Brad Roller and Laura Pedersen  
Mr. and Mrs. John R. Seifert  
The Smith & Oby Service Company

SS&G Financial Services  
Thompson Hine LLP  
United Way of Greater Cleveland  
University Hospitals Health System, Geauga Regional Hospital  
Waterway Gas & Wash  
Mr. and Mrs. Thomas K. Whitford  
Mr. and Mrs. Ellis E. Yan

### **\$500 - \$999**

Mr. and Mrs. Joseph C. Adams  
Ms. Elana Averbach  
Mr. and Mrs. Richard J. Clark, Jr.  
Mr. and Mrs. Paul Clark  
The Fedeli Group  
Mr. Stephen J. Knerly, Jr.  
Teri S. and Mark Levine  
Maloney + Novotny LLC  
Mr. and Mrs. Edward C. Martinelli  
Mr. and Mrs. Gregory P. McNulty  
Shaker Heights City School District  
TravelCenters of America

### **\$250 - \$499**

Ashland ENT, Allergy, & Hearing Aid Center  
Ms. Kristen Baird Adams  
Mr. Tom Bernot  
Cleveland Marriott Downtown at Key Center  
Cleveland Plumbing Industry Promotion and Education Fund  
Columbia Hills Country Club  
Mr. and Mrs. Anthony Coyne  
Mr. and Mrs. Paul G. DePompei  
The Honorable Matthew J. Dolan  
Farmers State Bank  
Mr. and Mrs. Kevin M. Gale  
Great Lakes Cheese Company, Inc.  
Guenther Mechanical, Inc.  
Ms. Mary R. Gygli  
Mr. and Mrs. Edward Hadaway  
Lake National Bank  
Mr. Nick McCurry  
Mechanical Contracting Industry Fund of Cleveland  
Plante & Moran PLLC  
Plumbers Local No. 55  
Simonson Construction  
Socius  
Ms. Margaret G. Weitzel  
XI Deuteron Chapter of Phi Gamma Delta

\* Denotes deceased

# Board of Directors

## Chairman

Richard W. Pogue Jones Day

## Vice Chairmen

Dennis M. Chack The Illuminating Co.  
David A. Doll UBS Financial Services

## Secretary

Laura A. Hauser Thompson Hine LLP

## Treasurer

Shawn M. Riley McDonald Hopkins LLC

## Committee Chairs

Gregory P. Lieb Audit  
Len Komoroski Nominating  
Daniel B. Ornt Service Delivery  
David A. Doll Financial Development  
Teri S. Levine Governance  
Joseph T. Kubic Marketing & Communications  
Kip Reader International Services  
Linda Bluso Co-Chair, Strategic Planning  
Clark Khayat Co-Chair, Strategic Planning  
Maria J. Pujana Volunteers  
Shawn M. Riley Executive, Finance  
D. Roberts (Rob) Reynolds Human Resources

## Directors Emeritus

Russell Gifford Albert M. Higley, Jr.  
William N. Hulett Richard J. Kaplan  
Dennis Lehman David D. Ludwick  
Eddie Taylor, Jr. Jacqueline F. Woods  
Marshall Wright

## Honorary Life Members

Edwina Moss Ron Warzel

## Board of Directors

Albert T. Adams Baker Hostetler  
Morris Beverage† Lakeland Community College  
Linda L. Bluso\* Baldwin-Wallace College  
Anne Bomar Dominion East Ohio  
James Cellura Medical Mutual of Ohio  
Anthony D. Decello\* HPM Partners  
Dennis Devine Citizens Financial Group  
Charter One  
Matthew J. Dolan† Thrasher, Dinsmore & Dolan  
Dennis E. Eckart† North Shore Associates  
Marc Feldman† Developers Diversified  
Martin L. Flask† Department of Public Safety,  
City of Cleveland  
Jane Grebenc Park View Federal Savings Bank  
Lynn-Ann Gries JumpStart  
Wayne Hill Fahlgren Mortine  
Jennie S. Hwang H-Technologies Group  
Clark Khayat\* Progressive Insurance  
Stephen J. Knerly, Jr. Hahn Loeser & Parks LLP  
Len Komoroski\* Cleveland Cavaliers  
Quicken Loans Arena



Joseph T. Kubic\* Adcom.Optiem  
Laurie J. Laidlaw\* Eaton Corporation  
Timothy Lathe KeyBank  
Teri S. Levine\* Community Volunteer  
Irvin (Irv) Leonard\* HPM Partners LLC  
Gregory P. Lieb\* Lubrizol Additives  
John Macintosh KPMG  
Bruce McCrodden Community Volunteer  
Hugh McKay\* Porter, Wright, Morris & Arthur LLP  
John McMillan Oatey Co.  
Sam Miller\* Forest City Enterprises  
Gary Mincer Clear Channel Radio  
Kai Monahan Nationwide Insurance  
Bernardo Moreno\* Collection Auto Group  
John G. Morikis\* The Sherwin-Williams Company  
Edwina Moss\* Community Volunteer  
David P. O'Brien, CPCU, ARM Oswald Companies  
Daniel B. Ornt, M.D., F.A.C.P.\* Case Western  
Reserve University, School of Medicine  
Nancy Paton 24/7 Consulting  
Maria J. Pujana, M.D.\* Case Western Reserve  
University  
Kip Reader\* Ulmer & Berne LLP  
D. Robert (Rob) Reynolds\* AT&T  
Eric V. Roegner Alcoa Forgings and Extrusions  
Brad Roller\* Vistage International, Inc.  
Jim Ross Cleveland Browns  
Shelley Seifert PNC Bank  
Richard C. Shaw Applied Industrial Technologies  
Roger Sherrard Park Hannifin Corporation  
Fareed Siddiq\* Smith Barney  
Ratanjit Sondhe Discoverhelp  
Brooke Sectorsky WKYC-TV  
Anthony Stallion, M.D. Cleveland Clinic  
Ronald J. Warzel Community Volunteer  
Hugh Whiting Jones Day  
J. Adam Zangerle STERIS Corporation

\* Executive Committee

† Ex-Officio Member



**American  
Red Cross**

of Greater Cleveland

# Fiscal Year 2011 Annual Report



The **American Red Cross of Greater Cleveland** saves and improves the quality of lives as the community leader in emergency preparedness, responding to disasters with humanitarian aid, and providing health and safety training.



**American  
Red Cross**  
of Greater Cleveland

3747 Euclid Avenue, Cleveland, OH 44115  
216.431.3010  
[www.redcross-cleveland.org](http://www.redcross-cleveland.org)  
Follow us on facebook and twitter